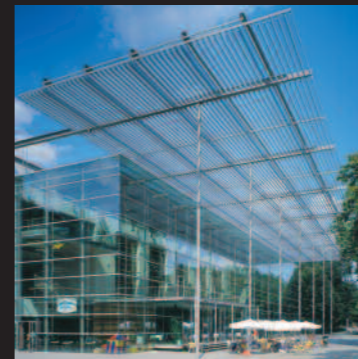
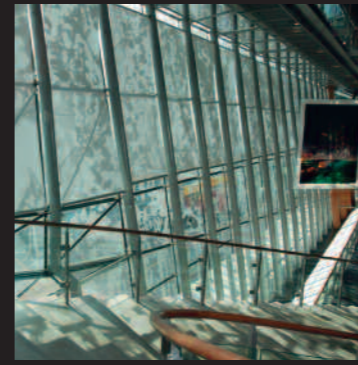




**External Venetian Blinds**

**HunterDouglas**

WINDOW COVERINGS



- Austria
- Belgium
- Bulgaria
- Croatia / Slovenia
- Czechia
- Denmark
- France
- Germany
- Greece
- Hungary
- Ireland
- Italy
- Kazakhstan
- the Netherlands
- Norway
- Poland
- Portugal
- Romania
- Russia
- Serbia
- Slovakia
- Spain
- Sweden
- Switzerland
- Turkey
- Ukraine
- United Kingdom
- Africa
- Middle East

- Asia
- Australia
- Latin America
- North America

**HUNTER DOUGLAS EUROPE B.V.**  
2, Piekstraat  
P.O. Box 5072 - 3008 AB Rotterdam  
Tel. +31 (0)10 - 4869911  
Fax +31 (0)10 - 4847910  
[www.hunterdouglascontract.com](http://www.hunterdouglascontract.com)

**HunterDouglas**

WINDOW COVERINGS | CEILINGS | SUN CONTROL | FAÇADES

# External Venetian Blinds

HunterDouglas® External Venetian Blinds enhance natural daylighting, reduce glare and regulate thermal gain to ensure comfort and increased productivity. The blinds can be raised and lowered depending on weather conditions and their tilt angle can be regulated to keep direct sunlight out and let natural daylight in creating complete user flexibility.

## Light Control

External Venetian Blinds have additional features that help manage light and glare for a number of situations: Maximizing 'free of charge' energy by adjusting the slat angle of External Venetian Blinds optimizes light intensity and regulates the light levels in the space, minimizing unwanted glare. Reflection and glare on computer screens causes eye fatigue and loss of performance. HunterDouglas® External Venetian Blinds provide enhanced light conditions in the room.

## Heat Control

External Blinds provide the most effective sun protection. Blinds opened at a 40° angle, with clear insulated glass will transmit only 10% of the total solar radiation to the interior. This creates optimal working conditions and a considerable reduction in energy hungry air-conditioning.



### SYSTEMS & CUSTOM DESIGN

- Heavy duty operating mechanisms
- Headrail, slats, and bottom rail engineered to withstand ice and snow loads
- Side guides, lift tapes and ladders designed to prevent vibration due to wind
- Wind-sensing-controls to retract blinds when needed
- Slats widths: 50, 60, 80, 88 and 100 mm
- Wide selection of durable finishes: double-stove-enameled & polyester-powder-coated
- Optional perforation: to maintain exterior views even when blinds are fully closed

### DESIGN, FUNCTIONALITY & COMFORT

- High performance sun control system
- Optimal light control with individual operation
- Retractable if not required
- Reduce need for air-conditioning - creating energy savings
- Improved daylight distribution
- Slats can be tilted in different angles to optimize shading and daylighting
- Reduces glare on screens and workspaces
- Improved working conditions with increase of productivity
- Privacy and high levels of comfort
- Reduced pollution due to energy saving
- Architectural aesthetic with a range of colours
- Control options: chain operated and fully motorized controls

Learn More: [www.hunterdouglascontract.com](http://www.hunterdouglascontract.com)



Efficient Solution

#### DUOLUX™ LIGHT CONTROL

The number of computer screen workplaces has grown dramatically over the past years. The Hunter Douglas Duolux™ Light Control Blind was designed to offer the optimal solution for screen work spaces. Duolux™ Light Control Blinds offer a high degree of flexibility in setting the required slat angle, due to the almost independent tilting of the top and lower part of the blind. This feature enables optimal light conditions throughout the space contributing to a productive working environment.

#### DUOLUX™ - SLOW MOTION

Using a special electric motor the speed of the tilt movement is reduced to approx. one quarter of the original speed. The exact tilting of the slats enables to effectively manage daylight reflection. This feature offers the user a high level of operation comfort.

