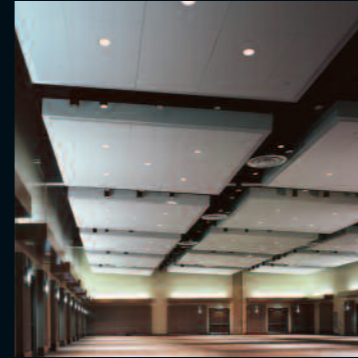
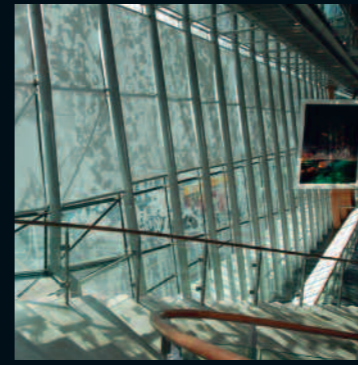




Silhouette® Shades

**HunterDouglas**

WINDOW COVERINGS



- Austria
- Belgium
- Bulgaria
- Croatia / Slovenia
- Czechia
- Denmark
- France
- Germany
- Greece
- Hungary
- Ireland
- Italy
- Kazakhstan
- the Netherlands
- Norway
- Poland
- Portugal
- Romania
- Russia
- Serbia
- Slovakia
- Spain
- Sweden
- Switzerland
- Turkey
- Ukraine
- United Kingdom
- Africa
- Middle East

- Asia
- Australia
- Latin America
- North America

**HUNTER DOUGLAS EUROPE B.V.**  
 2, Piekstraat  
 P.O. Box 5072 - 3008 AB Rotterdam  
 Tel. +31 (0)10 - 4869911  
 Fax +31 (0)10 - 4847910  
[www.hunterdouglascontract.com](http://www.hunterdouglascontract.com)

**HunterDouglas**

WINDOW COVERINGS | CEILINGS | SUN CONTROL | FAÇADES

# Silhouette® Shades

HunterDouglas® Silhouette® Shades - a category-defining combination of functionality and appearance. Our exclusive Silhouette® Window Shadings filter light while reducing glare as well as providing total privacy.

## Light & Heat Control

Silhouette® Shades are highly suited for optimal light and heat control and provides insulation that significantly contributes to energy efficiency by reducing thermal transfer and solar gain.

# The beauty of Natural Light

Suspended between two soft sheer facings of polyester, the fully adjustable fabric vanes can be raised and lowered to control light intensity without losing the benefits of natural daylight.

HunterDouglas® Silhouette® Shades soften excessive sunlight by diffusing direct into a room. When fully opened Silhouette® vanes provide an unobstructed view to outside. The vanes can be tilted with precision, to create a warm glow of softly diffused light or closed for complete privacy.



### DESIGN, FUNCTIONALITY & COMFORT

- Innovative, high design look
- Suspended vanes are fully adjustable to give precise total control of light, heat and privacy
- Excellent at reducing harmful UV radiation
- Contribute to energy conservation by reducing thermal transfer and solar gain
- Excellent sound absorption
- Sheer layers have different openness factors to soften direct sunlight
- Fabrics are available in 2 transparencies and a range of colours
- Available vane widths: 50, 75 and 100 mm
- Anti-static, Anti shirk fabric made with durable 100% polyester
- All visible components are colour coordinated
- Slim headrail that fully conceals the working mechanism, shade, and any wiring when raised
- Treated with a dust and dirt repellent
- Easy cleaning with an ultrasonic treatment
- Operated by cord, mono commando, or motorized

Learn More: [www.hunterdouglascontract.com](http://www.hunterdouglascontract.com)

### OUTSTANDING LIGHT DIFFUSION

Silhouette® Shades diffuse harsh sunlight, evening it out and making softer. At the same time Silhouette® Shades provide an excellent UV protection for the interiors.

